



CITY OF HIGHLAND

27215 Base Line, Highland, CA 92346
Telephone (909) 864-8732 FAX: (909) 862-3180

NOTICE OF INTENT TO ADOPT A MITIGATED NEGATIVE DECLARATION

Pursuant to Title 14 of the California Code of Regulations, Sections 15072 and 15073, this is to advise that the City of Highland, which is the lead agency overseeing this project, has completed a Mitigated Negative Declaration for the proposed project described below.

PROJECT TITLE & FILE No.: Base Line Bridge Replacement Project

PROJECT LOCATION: Base Line at City Creek, 0.4 mile east of State Route 210 (SR-210) between Boulder Avenue and Yarnell Road.

PROJECT DESCRIPTION: The City of Highland (City), in cooperation with the California Department of Transportation (Caltrans), District 8, and the Federal Highway Administration (FHWA), proposes a replacement bridge for the Base Line Bridge (State Bridge Number 54C0035) located on Base Line Road at City Creek, approximately 0.4 mile east of SR-210. The proposed replacement bridge will accommodate four lanes of vehicular traffic with dedicated space for pedestrians and bicyclists in accordance with current Federal, State, and applicable local geometric standards. The proposed project will include four 12-foot lanes, a 16-foot median, two 8-foot shoulders, and two dedicated 5-foot pedestrian corridors separated from vehicle lanes by a concrete barrier along the length of the bridge. The new bridge will measure approximately 95.5 feet wide and 600 feet long and replace the existing 72-foot-wide and 42-foot-long bridge. Both the northern and southern edges of the proposed bridge deck will extend past their current locations to accommodate standard shoulders and the pedestrian corridors. Compared to existing conditions, the replacement bridge profile will be raised to accommodate current roadway design standards and will allow additional horizontal clearance for water flows to pass beneath Base Line. The project also includes the construction of street improvements including utility construction, pavement widening, curbs, gutters, sidewalks, and street lighting and the relocation of utilities as needed.

PUBLIC REVIEW PERIOD: The Mitigated Negative Declaration is available for public review and comment pursuant to California Code of Regulations, Title 14, Sections 15072 and 15073 (California Environmental Quality Act). Your comments may be sent as soon as possible, but **no later than 5:00 p.m., Monday, March 12, 2018**. All comments must be submitted in writing to the address below. Please refer to this project by the file/index number listed above. If you have no comment, no reply is necessary. The comment period during which the City will receive comments on the Mitigated Negative Declaration is:

PUBLIC HEARING: The City of Highland Planning Commission will make a decision regarding this project and the associated Mitigated Negative Declaration at on **March 20, 2018** or at a later date to be determined.

RESPONSES AND COMMENTS: Please send your written comments to:

Dennis Barton
City of Highland
27215 Base Line
Highland, California 92346
Phone (909) 864-6861, FAX (909) 862-3180
Email: dbarton@cityofhighland.org

DOCUMENT AVAILABILITY: Copies of the project plans and the associated Mitigated Negative Declaration are available for public review on the City's website at <http://www.cityofhighland.org/PublicNotices/> , and at the following locations:

- Highland City Hall, Community Development Department, 27215 Base Line, Highland, CA 92346
- Highland Sam J. Racadio Library, 7863 Central Ave, Highland, CA 92346

If you require additional information, please contact:

Kim Stater, Assistant Community Development Director
Phone: (909) 864-8732, ext. 204.
Email: kstater@cityofhighland.org



CITY OF HIGHLAND

27215 Base Line, Highland, CA 92346
 Telephone (909) 864-8732 FAX: (909) 862-3180

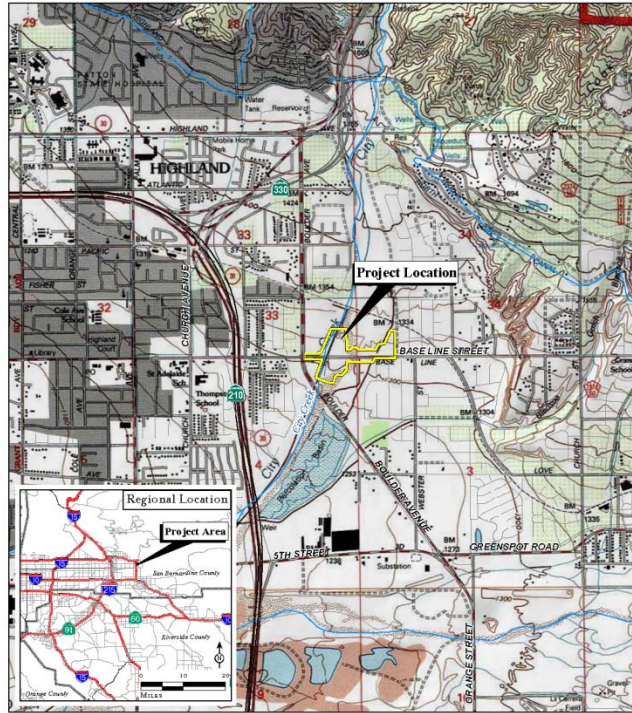
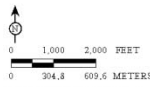


FIGURE 1



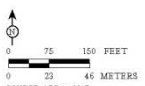
Base Line Bridge Over City Creek (Replace)

Regional and Project Location

SOURCE: USGS 7.5' Quadr: Redlands and Harrison Mtn. (1948), CA, ESRI Streetmap, 2013
 1\A\EM1603\LM0801\Report\lusa\Study\Fig_reg_loc.mxd (12/13/2017)



FIGURE 2



SOURCE: AECOM, 2017
 1\A\EM1603\LM0801\Report\lusa\Study\Fig2_ProposedProject.mxd (12/13/2017)

- Project Limits
- Abutment
- Access
- Accommodations for Future Trail
- Column
- Concrete Barrier
- Cut-off Wall
- Direction of Flow
- Existing City ROW
- Guard Rail
- Light Pole & Filaster/Pedestal
- Metal Barrier
- Rip-Rap
- Striping
- Toe of Slope
- Top of Slope
- Channeled Grading
- Proposed Fill

Base Line Bridge Over City Creek (Replace)

PROJECT DESIGN